

Livestock Road  
Transfer Site  
427 Livestock Road  
Rustburg, VA 24588

Hours of Operation:  
6:30 a.m. – 9:00 p.m. daily

-----  
Region 2000  
Services Authority  
Livestock Road  
Regional Landfill  
361 Livestock Road  
Rustburg, VA 24588  
(434)455-6086

Hours of Operation:  
Monday – Friday  
7:00 a.m. – 4:00 p.m.

Saturday  
7:00 a.m. – 12:00 p.m.



*For disposal of electronics (e-waste) and household hazardous materials, please contact the Region 2000 Services Authority Livestock Road Regional Landfill at (434) 455-6086 or visit their website at [www.region2000servicesauthority.org](http://www.region2000servicesauthority.org).*

*Please call (434) 332-9528 or visit [www.campbellcountyva.gov](http://www.campbellcountyva.gov) if you have additional questions.*

Excerpt from County Code, Chapter 12:  
Load Size, Tires, and Brush/Yard Waste

**Load Size.** Residential debris hauled in any vehicle will be limited to the equivalent of a pickup truck bed of approximately 60 cubic feet per day. Any larger loads must be taken to the Region 2000 Services Authority Livestock Road Regional Landfill.

**Tires.** County residents may dispose of eight (8) tires per year, in loads of up to four (4) tires at a time, at the Livestock Road Transfer Site only. The Towns of Altavista and Brookneal may bring tires from their town maintenance shops to the Livestock Road Transfer Site only. All others must be taken to the Region 2000 Services Authority Livestock Road Regional Landfill.

**Brush and Yard Waste.** County residents may dispose of an unlimited amount of brush and yard waste collected from their residences at the Livestock Road Transfer Site only. All commercial haulers of brush and yard waste must take their loads to the Region 2000 Services Authority Livestock Road Regional Landfill unless they have negotiated a separate contractual arrangement with the County's Director of Public Works.

Additional restrictions may be found in the Campbell County Code, Chapter 12: Garbage, Refuse, and Weeds.



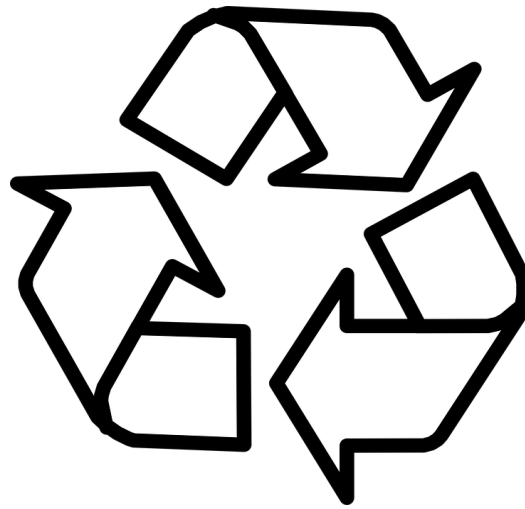
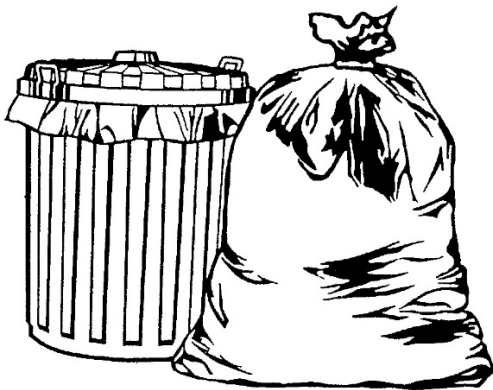
## Livestock Road Transfer Site & Regional Landfill

## A Citizen's Guide to Site Use and Recycling

Campbell County Public Works  
47 Courthouse Lane  
Rustburg, VA 24588  
(434)332-9528  
[www.campbellcountyva.gov](http://www.campbellcountyva.gov)

The following items are permitted at the Livestock Road Transfer Site:

- Bagged household waste
- Construction and demolition waste from *residential improvement projects only*
- Latex paint – dried with saw dust or kitty litter
- Furniture
- Brush



The following recyclables are accepted at the Livestock Road Transfer Site:

- Waste Oil
- Batteries
- Tires
- White goods (appliances)
- Mixed paper
- Newspaper
- Aluminum
- Aluminum cans
- Bi-metal cans
- Brush and leaves, not bagged

Certain items are not permitted at transfer sites and must be disposed of at the Region 2000 Services Authority Livestock Road Regional Landfill.

These include:

- Regulated hazardous materials
- Pesticide containers not cleaned, crushed, or opened
- Drums, not emptied, cleaned, or opened
- Gas tanks and cylinders
- PCB or Dioxin containing solid waste
- Fluorescent bulbs
- Shingles\*
- Dead animals\*

*\*Please note: Shingles and dead animals are not allowed at any of the transfer sites and must be disposed of at the Region 2000 Services Authority Livestock Road Regional Landfill at the standard tipping fee.*